

**ONLY 1,020 SF**  
**LEFT IN PHASE 1!**



**30' Pylon**  
**at both entrances**

**NOW LEASING**

STARBUCKS	CHIPOTLE
HOT TABLE PANINI	GENTLE DENTAL
Sprint	Orangetheory FITNESS
Island Fin	<b>LEASE PENDING</b>
<b>LEASE PENDING</b>	<b>LEASE PENDING</b>
Alpha Nails	<b>LEASE PENDING</b>
<b>LEASE PENDING</b>	GALAXY MANAGEMENT, LLC 508-721-0005

**LAST BUILDING STARTS FALL 2019!**

**2,000 SF - 40,000 SF**

- ★ PARK AVENUE ADT 21,000 +/-
- ★ SIGNALIZED INTERSECTION
- ★ GOLD STAR BLVD TRADE AREA
- ★ GROVE STREET ADT 19,000 +/-

1 MILE	3 MILES	5 MILES
POPULATION		
17,808	148,516	223,292
AHH INCOME		
\$63,889	\$60,270	\$68,376

**CONTACT:**  
MICHAEL O'BRIEN -PRINCIPAL  
MIKE@GALAXYDEVELOPMENT.NET  
508.721.0005

# THE TROLLEY YARD

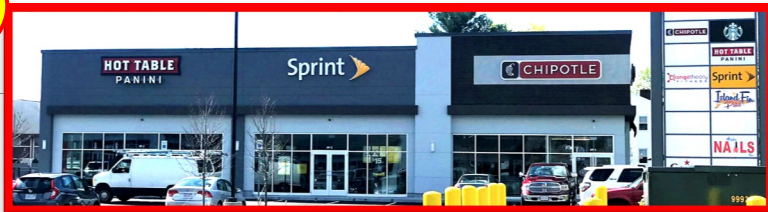
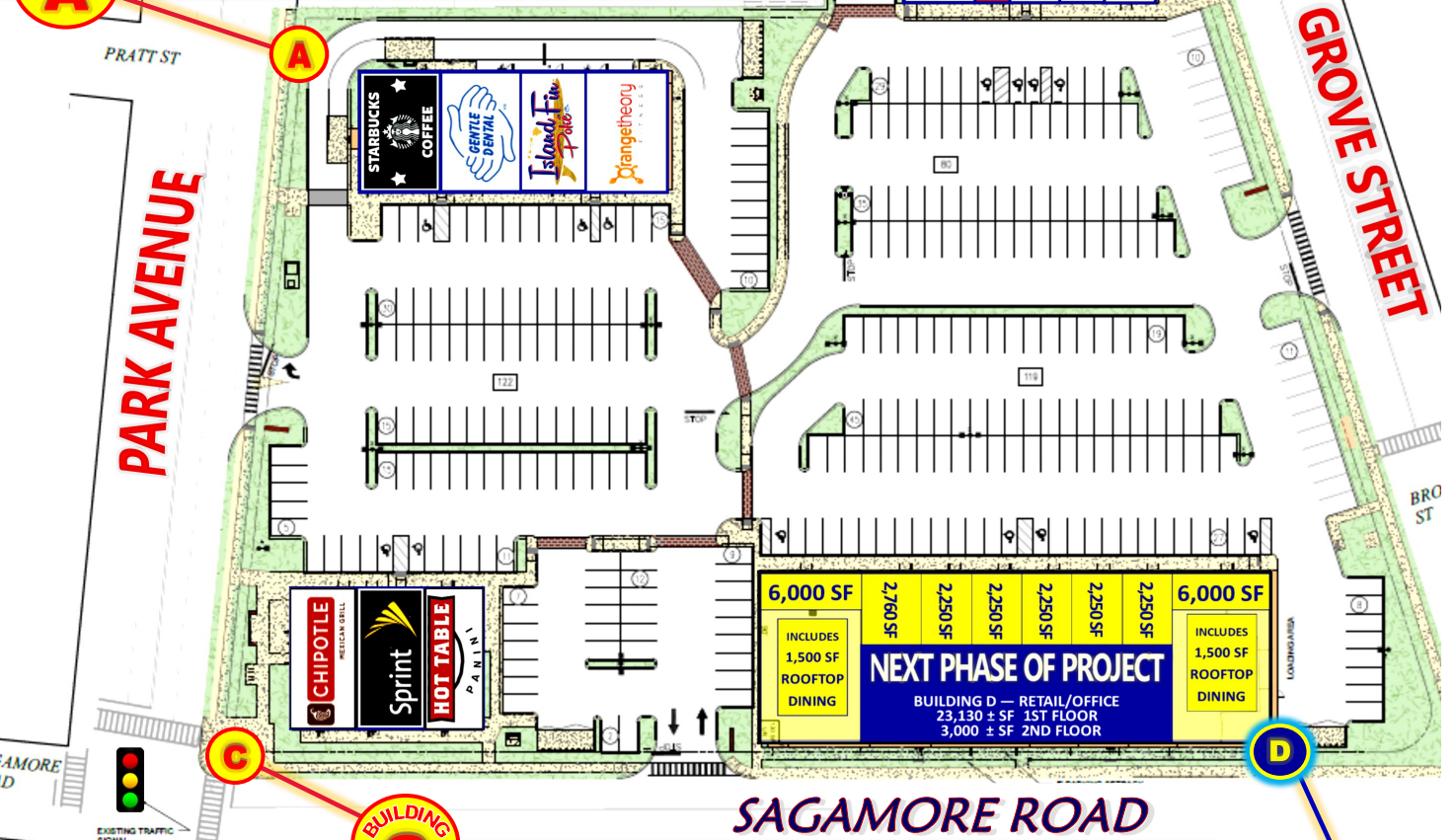


# WORCESTER, MA



**BUILDING A**

**B**  
LEASE PENDING  
AVAILABLE 1,020 SF  
LEASE PENDING  
**Alpha Nails**  
LEASE PENDING



**BUILDING C**

**BUILDING D**

**GALAXY**  
DEVELOPMENT, LLC

## ROOF TOP DINING OPTIONS



Galaxy Development, LLC, makes no warranties or representations, expressed or implied, regarding the accuracy of the information contained herein. All information has been obtained from sources deemed to be reliable & is subject to errors & omissions.